

STONE



Bellingham Drive RH2

£500,000

“At Stone, we’re passionate about the unique and awe-inspiring architectural elements that transform houses into dream homes.”

————— *The Stone Family*

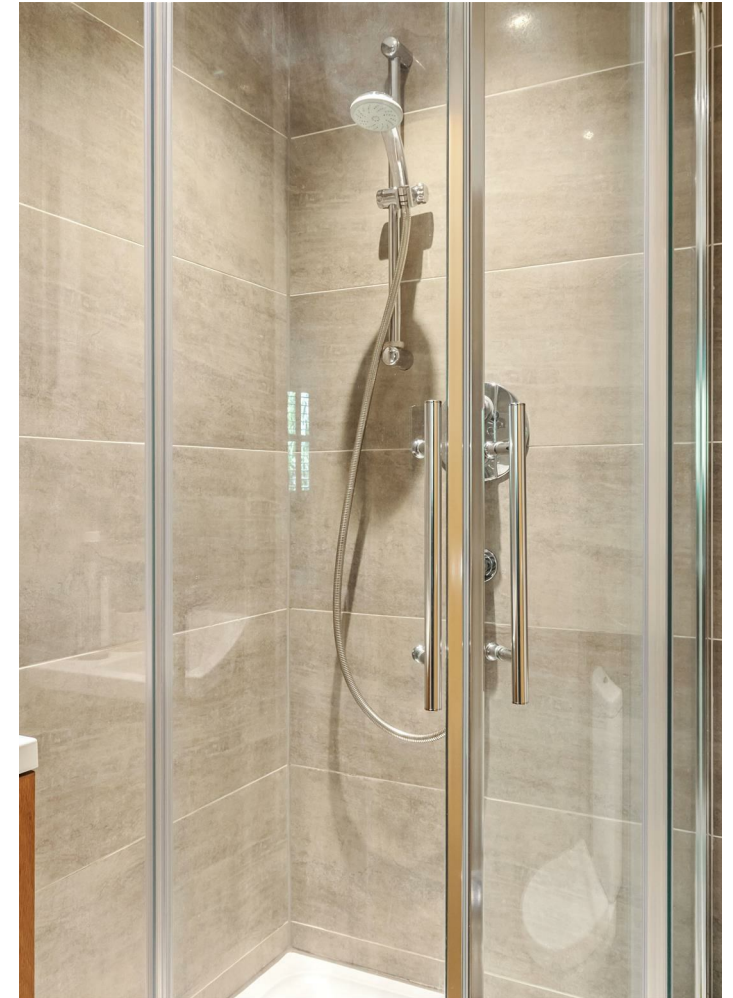


Tucked into the peaceful curve of Bellingham Drive, just a short stroll from the characterful heart of Reigate, this modern, two-bedroom ground-floor flat offers a way of living that feels both wonderfully convenient and quietly indulgent. Within its gated development, a sense of calm is immediate.

Cross the threshold and you're met with interiors that feel effortlessly composed. A palette of neutral tones creates a soothing backdrop, allowing both daylight and evening lamplight to settle beautifully across the rooms. Shutter blinds add an architectural crispness, enhancing the play of light while giving each space a pleasing sense of structure. Throughout, built-in cabinetry ensures that storage is never an afterthought, presenting a home that remains uncluttered and harmonious.

The large living and dining area is particularly striking: a wonderfully open space that manages to feel both airy and intimate. It's easy to imagine slow Sunday mornings here, with the shutters half-open, a coffee steaming on the table, and the quiet movement of the neighbourhood just beyond. Equally, the room adapts naturally to entertaining — dinner with friends, glasses clinking, laughter softening into the late evening.







Living in the centre of Reigate offers a vibrant and dynamic lifestyle filled with an array of opportunities and conveniences. This picturesque town, nestled in the heart of Surrey, boasts a charming blend of historic architecture, bustling streets, and green spaces, creating an inviting atmosphere for residents.

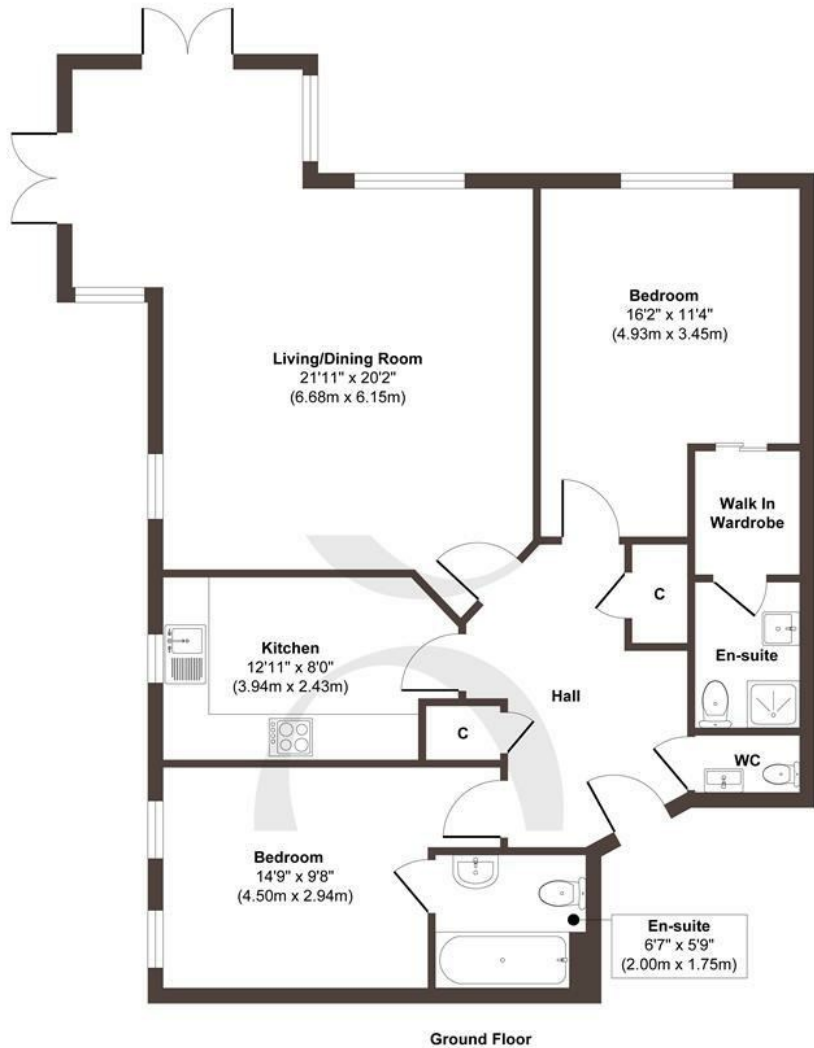
From quaint cafes and trendy eateries to boutique shops and local markets, there's always something new to explore just steps away from your doorstep. Whether you're craving a leisurely brunch on a lazy Sunday morning or seeking inspiration for date night dinners, the town center offers an eclectic mix of options to suit every taste and occasion.

Reigate's vibrant social scene provides ample opportunities for young couples to connect with like-minded individuals and immerse themselves in the local community. Whether it's attending cultural events, joining recreational clubs, or simply strolling through the picturesque Priory Park, there's no shortage of ways to enjoy quality time with friends.









Approx. Gross Internal Floor Area 971 sq. ft / 90.20 sq. m

Illustration for identification purposes only, measurements are approximate, not to scale.

Produced by Elements Property

STONE

The Details

- Modern two-bedroom ground-floor apartment in sought-after Reigate location
- Set within an exclusive and secure gated development
- Neutral interior palette creating a calm, move-in-ready setting
- Built-in cabinetry offering excellent storage throughout
- Bright and airy rooms with excellent natural light
- Ground-floor position offering easy access and step-free living
- Private allocated parking space within the gated grounds
- Offered to the market with no chain

Size
Approx 971.00 sqft

Energy Performance Certificate (EPC)
Rating C

Council Tax Band
E



STONE

Let's Talk

01737 301 557

hello@stoneestateagents.co.uk

stoneestateagents.co.uk

The particulars above are a guide, not an offer or contract. Descriptions photographs and plans are not statements or representations of fact. Measurements are approximate and not to scale. Prospective purchasers must verify the accuracy of the information within the particulars. Stone does not give any representations or warranties; nor represent the Seller legally. Stone has no liability, for any costs, losses or expenses incurred by the Seller or a prospective buyer relating to the sales and buying transaction. Our Sales Disclaimer, trading names and privacy policy on how your data is processed and used is found in full on our website in our Privacy Statement.

© Stone Estate Agents 2023 All rights Reserved